

THE TROPICAL COLLECTION

1st Quality, 3.6 oz. Polyfill, Conventional Stitch with Poly/Cotton Backing

Matching Fabric 54" width - 100 yd. minimum -



Tropical Flowers



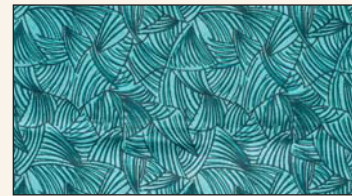
Caribbean Bloom



South Pacific



Midnight Garden



Seabreeze

THE MARTEX COLLECTION

5oz Polyester Fill, Conventional Stitch, F.O.B. Factory (**additional freight from factory**)
Solid Colors: Slate, Bone, English Rose, Pale Green, Forest Green, Chianti, Navy, Khaki



Palmer



Hilton Head



Tapestry Rose



Home Terrace



Vienna